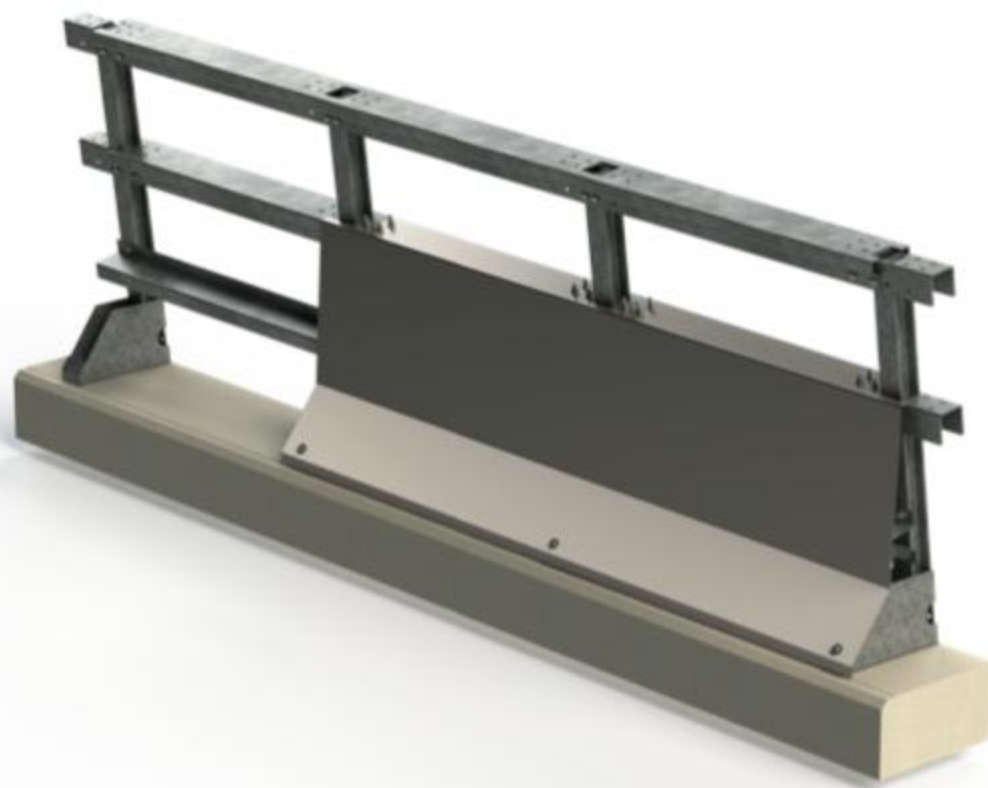


# POLY

Safety bridge barred and noise integrated device

## "POLY NJ" containment level H4b



### Characteristics

Containment Class: **H4b** Impact Severity: **B**  
Theoretical Head Impact Velocity "THVI" [Km/h]: **30,68**  
Working Width "W" [m]: **0,9/W3 - 1,90/W6**  
Dynamic Deflection "Dn" [m]: **0,50**  
Vehicle Intrusion "Vin" [m]: **1,70/Vi5**  
Installation Type: **reinforced concrete**

### Durability

Galvanized steel in accordance with EN ISO 1461  
Dangerous substances: **NPD**

# Safety Barrier "Poly"

The "Poly<sup>®</sup>" safety barrier is the innovative containment system designed and managed by Ticopter for bridge edge protection. The device meets the requirements of European standard UNI EN 1317-1 and 2: 2010 with a **containment level equal to H4b** (test TB81 and TB11). Poly<sup>®</sup> owes its name to the additional functions, being at the same time able to guarantee safety both as a **bridge edge barrier** with a new jersey profile, and as an noise integrated barrier, with the possibility of being implemented with sound-absorbing panels, glass panels, mesh panels, anti-throwing net and windbreak.

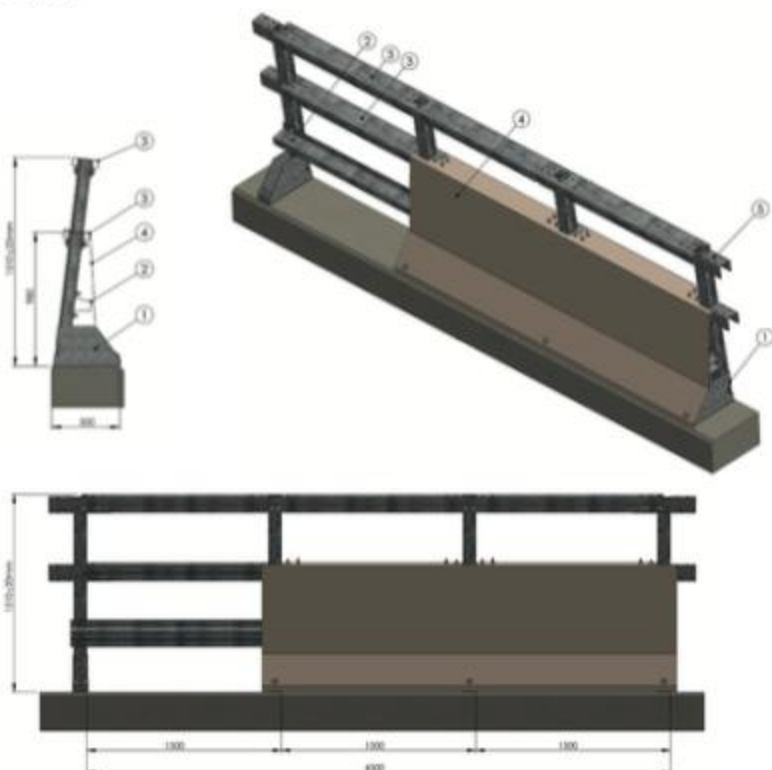
It can be used as an integrated barrier from 2m up to a height of 5m. On 1st April 2009 it was registered under the European Patent Specification (EP1619311).

## Main features

- Steel **new jersey** with a modular structure 1,50 m long;
- Extremely **functional** during transport, installation and customisation;
- Installation on **curb of reinforced concrete** and anchorage through **only one stud bolt** per post;
- **Moderate weight** and consequent very **fast assembly**;
- Certified and tested **for bikers** according to UNI EN TR 1317: 8.
- Many alternatives of customization both in terms of materials (galvanized structural steel or corten) and of configurations and colors (aesthetic veils, ect...).

## Safety device dimensions

- Height above ground: from 1510±20mm to 5000±20mm;
- Post center distance: 1500mm;
- Device width: 500mm.



- ① Post HEA100
- ② Omega lower beam
- ③ Middle and upper beam with "C" section
- ④ Cover coat
- ⑤ Connection joint

## "Poly<sup>®</sup>" safety barrier

Test N.	Notified body	Date crash test	Vehicle	Mass [Kg]	Velocity [Km/h]	Angle of impact [°]
0068/ME/HRB/18	C.S.I.- Bollate (MI)	28.06.2018	Car	937	104	20°
0067/ME/HRB/18	C.S.I.- Bollate (MI)	30.06.2018	Articolated lorry	37.400	65,30	20°
0094/ME/HRB/18	C.S.I.- Bollate (MI)	09.10.2019	Motorcyclist	87,5	60	30°





# POLY CONFIGURATIONS

## "POLY ACOUSTIC"

NOISE BARRIER INTEGRATED WITH ACOUSTIC PANELS AND/OR GLASS, PMMA



### Other versions and size:

- Height between 2 and 5 meters

## "POLY NET" & "POLY NET PANEL"

BARRIER INTEGRATED FOR NET AND NET PANELS



### Other versions and size:

- Height between 2 and 4 meters

## "POLY NJ C"

SAFETY BRIDGE BARRIER IN CORTEN STEEL, CUSTOMIZABLE



### Other versions and size:

- The device is available with painted components and customizable with aesthetic carter